

Reorganization and Academic Planning

Division of
Student Affairs
April 23, 2024

SONOMA
STATE
UNIVERSITY

Agenda

1. Academic Planning
2. Academic
Reorganization
3. Q&A

Academic Planning

Finished Working Groups:

- Liberal Arts and HSI (Spring 2023)
- Strategic Course Scheduling (Spring 2023)
- Learning Spaces and Technology (Fall 2023)

Groups still working:

- Current and New Programs (started Spring 2023; finish Spring 2023)
- Academic Student Success (start and finish Spring 2024)

Spring 2024 Working Groups

Current and New Programs:

- Re-evaluating their fall 2023 report in light of economic data provided by Gray Decision Intelligence
 - Recommendations: Grow, Sustain, Adjust, Sunset
- Will be developing recommendations for new programs

Academic Support Services:

- Focus on students and on academically related support services
- Focusing on gaps and on building services for the new AMP

AMP Next Steps

- **Spring 2024**

- Developing implementation plan and timeline (5-year plan)
- Steering Committee will review recommendations for 3 Working Groups to determine final plan

- **Fall 2024**

- Steering Committee will review recommendations for remaining 2 Working Groups to determine final plan
- Finalize plan and provide opportunity for campus-wide review and comments
- Begin executing implementation plan

Academic Reorganization

- Omnibus Proposal released to campus on December 7
- Assigned to APARC for review and comments due March 15
- Provost consults with President Lee March 15 - April 1
- Proposal finalized April 3
- School chairs elected by May 24

Key Milestones and Timeline



**SONOMA
STATE**
UNIVERSITY

- **Fall 2023**
 - Consultation and structure development
- **Spring 2024**
 - Consultation and structure finalization
 - PeopleSoft update and testing
 - Fall 2024 planning
 - Presidential Approval (April 3, 2024)
 - Chair elections and Catalog updates
 - Union notifications as appropriate
- **Spring-Summer 2024**
 - Personnel updates
 - Website updates
- **Fall 2024**
 - Move and signage planning
- **Summer 2025**
 - Moves
 - Signage installation

New Structure–Academic Affairs

A. Colleges

The reorganization consolidated 5 Schools into 3 Colleges:

- Education, Counseling, and Ethnic Studies (ECES)
- Humanities, Social Sciences, and the Arts (HSSA)
- Science, Technology, and Business (STB)

B. Schools

- Current Structure: 37 Departments with 37 Department Chairs
- New Structure: 5 standalone Departments and 14 Schools with a total of 20 Chairs
 - *Final Model for determining standalone Departments:* Departments must have more than 250 major headcount to stand alone but could form a school if they chose.

College of Science, Technology, and Business

**School A: Chemistry, Physics, and
Geology**

School B: Biology

**School C: Nursing and Health
Sciences**

**School D: Electrical Engineering
and Computer Science**

**School E: Business Administration
and Extended Education**

**School F: Mathematics,
Economics, and Statistics**

School G: Kinesiology

**SONOMA
STATE
UNIVERSITY**

College of Education, Counseling, and Ethnic Studies

School A: Counseling

School B: Early Childhood Studies

**School C: Literacy Studies &
Elementary Education, Education
Leadership & Special Education,
Curriculum Studies & Secondary
Education, MA Education**

**School D: Hutchins Liberal Studies
and Liberal Arts**

**School E: Ethnic Studies and
Languages**

College of Humanities, Social Sciences, and the Arts

**School A: Sociology and Criminology
and Criminal Justice Studies**

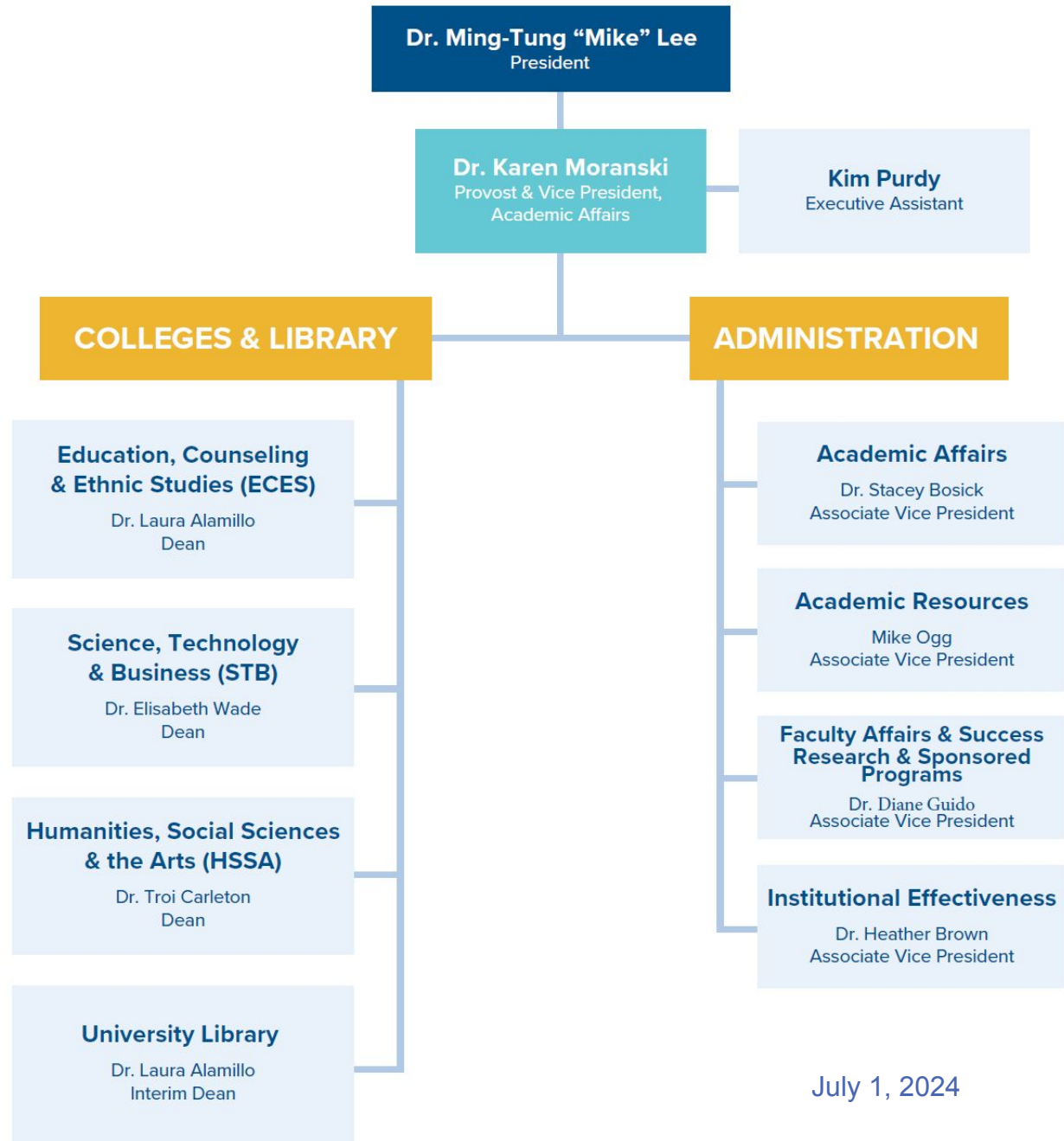
**School B: History, Art History, and
Political Science**

**School C: Anthropology, Human
Development, and GEP**

**School D: English, Philosophy, and
Women and Gender Studies**

**School E: Music, Theater Arts and
Dance, Art Studio, Communication and
Media Studies, Affiliated Program:
Creative Writing**

School F: Psychology



July 1, 2024

Thanks to Our Stakeholders!



**SONOMA
STATE
UNIVERSITY**

- IT
- Advancement
- Academic Programs
- Registrar
- CTET
- OIE
- Faculty Reporting
- Faculty Affairs and Success
- HR
- Strat Comm
- AMs
- Advising
- Seawolf Services
- Academic Resources
- SEIE/Summer Stateside
- Scholarships
- Deans
- Graduation
- Admin and Finance
- Strategic Enrollment
- Facilities
- Associated Students
- Staff Council
- Faculty Governance
- Students Affairs
- Community
- Mail Services

Questions?

**SONOMA
STATE**
UNIVERSITY