

# Reorganization and Academic Planning

Associated  
Students  
April 30, 2024

SONOMA  
STATE  
UNIVERSITY

## Agenda

1. Academic Planning
2. Academic  
Reorganization
3. Q&A

# Academic Planning

## Finished Working Groups:

- Liberal Arts and HSI (Spring 2023)
- Strategic Course Scheduling (Spring 2023)
- Learning Spaces and Technology (Fall 2023)

## Groups still working:

- Current and New Programs (started Spring 2023; finish Spring 2023)
- Academic Student Success (start and finish Spring 2024)

# Spring 2024 Working Groups

## Current and New Programs:

- Re-evaluating their fall 2023 report in light of economic data provided by Gray Decision Intelligence
  - Recommendations: Grow, Sustain, Adjust, Sunset
- Will be developing recommendations for new programs

## Academic Support Services:

- Focus on students and on academically related support services
- Focusing on gaps and on building services for the new AMP

# AMP Next Steps

- **Spring 2024**

- Developing implementation plan and timeline (5-year plan)
- Steering Committee will review recommendations for 3 Working Groups to determine final plan

- **Fall 2024**

- Steering Committee will review recommendations for remaining 2 Working Groups to determine final plan
- Finalize plan and provide opportunity for campus-wide review and comments
- Begin executing implementation plan

# Academic Reorganization

- Omnibus Proposal released to campus on December 7
- Assigned to APARC for review and comments due March 15
- Provost consults with President Lee March 15 - April 1
- Proposal finalized April 3
- School chairs elected by May 24



# Key Milestones and Timeline



**SONOMA  
STATE  
UNIVERSITY**

- **Fall 2023**
  - Consultation and structure development
- **Spring 2024**
  - Consultation and structure finalization
  - PeopleSoft update and testing
  - Fall 2024 planning
  - Presidential Approval (April 3, 2024)
  - Chair elections and Catalog updates
  - Union notifications as appropriate
- **Spring-Summer 2024**
  - Personnel updates
  - Website updates
- **Fall 2024**
  - Move and signage planning
- **Summer 2025**
  - Moves
  - Signage installation

# New Structure–Academic Affairs

## A. Colleges

The reorganization consolidated 5 Schools into 3 Colleges:

- Education, Counseling, and Ethnic Studies (ECES)
- Humanities, Social Sciences, and the Arts (HSSA)
- Science, Technology, and Business (STB)

## B. Schools

- Current Structure: 37 Departments with 37 Department Chairs
- New Structure: 5 standalone Departments and 14 Schools with a total of 20 Chairs
  - *Final Model for determining standalone Departments:* Departments must have more than 250 major headcount to stand alone but could form a school if they chose.

## **College of Science, Technology, and Business**

**School A: Chemistry, Physics, and  
Geology**

**School B: Biology**

**School C: Nursing and Health  
Sciences**

**School D: Electrical Engineering  
and Computer Science**

**School E: Business Administration  
and Extended Education**

**School F: Mathematics,  
Economics, and Statistics**

**School G: Kinesiology**

**SONOMA  
STATE  
UNIVERSITY**

## **College of Education, Counseling, and Ethnic Studies**

**School A: Counseling**

**School B: Early Childhood Studies**

**School C: Literacy Studies &  
Elementary Education, Education  
Leadership & Special Education,  
Curriculum Studies & Secondary  
Education, MA Education**

**School D: Hutchins Liberal Studies  
and Liberal Arts**

**School E: Ethnic Studies and  
Languages**

## **College of Humanities, Social Sciences, and the Arts**

**School A: Sociology and Criminology  
and Criminal Justice Studies**

**School B: History, Art History, and  
Political Science**

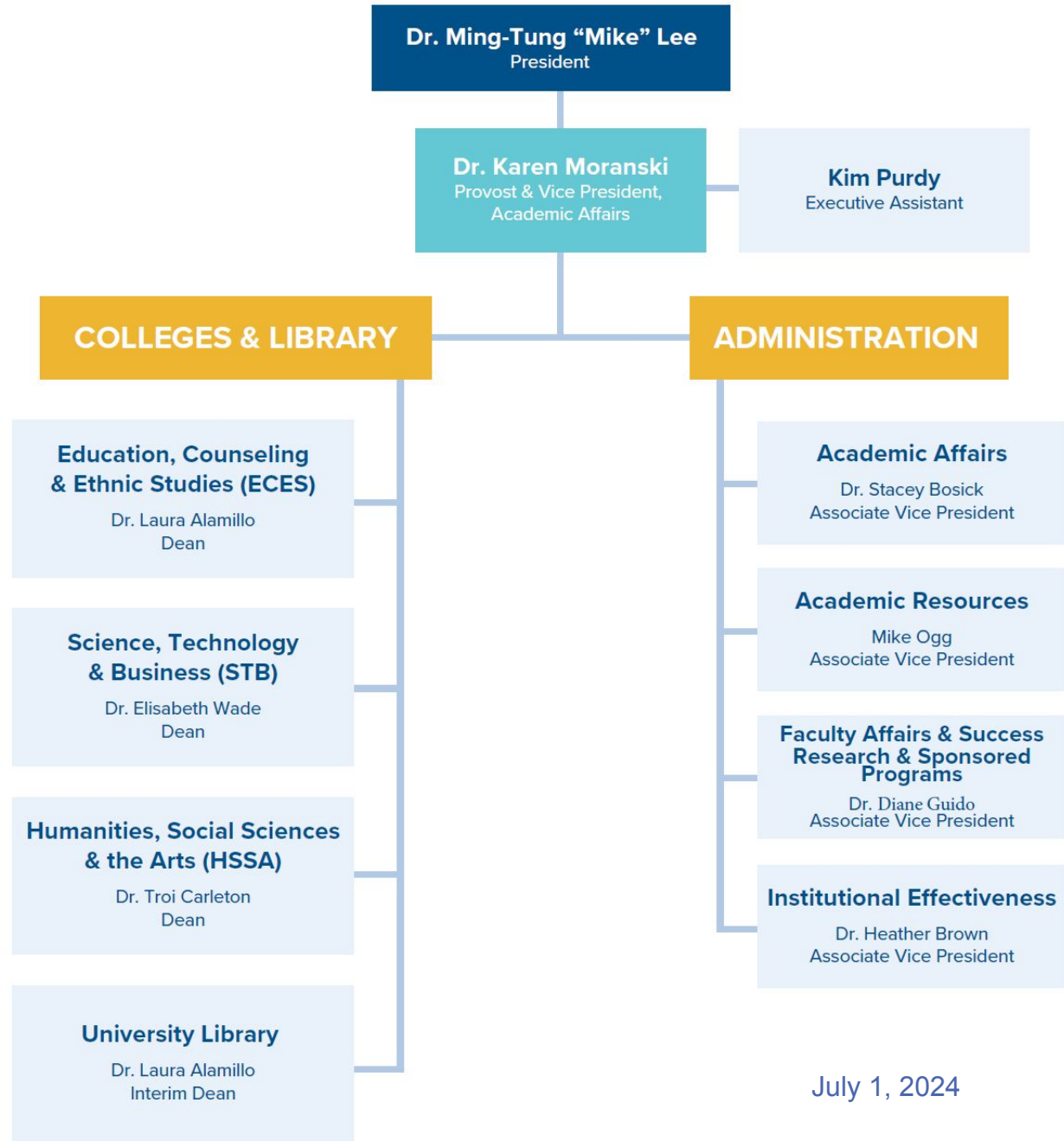
**School C: Anthropology, Human  
Development, and GEP**

**School D: English, Philosophy, and  
Women and Gender Studies**

**School E: Music, Theater Arts and  
Dance, Art Studio, Communication and  
Media Studies, Affiliated Program:  
Creative Writing**

**School F: Psychology**





July 1, 2024

# Questions?

**SONOMA  
STATE**  
UNIVERSITY